



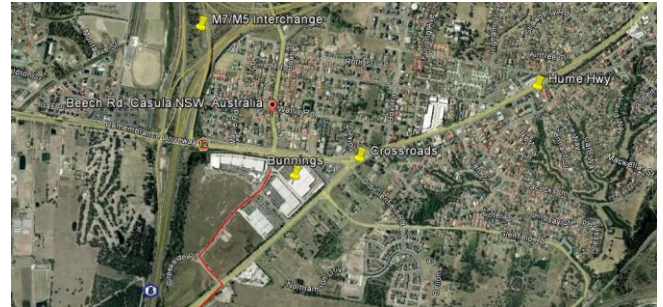
Porsche Club
New South Wales



SUNDAY 26th May 2013

**BREAKFAST DRIVE TO CHIFLEY HOTEL EASTERN CREEK
FOR PCA RENNSPORT EVENT ATTENDANCE.**

Another fabulous PCNSW Drive. Starting from Bunning's Car Park Cross Road (Beech Rd Casula) .



Come and enjoy an early morning breakfast run from the Crossroads near Liverpool, out through Oran Park Village (see how they have destroyed our beloved Oran Park Raceway), Camden, Werornbi, Silverdale, Waragambah, Mulgoa and arrive at the new Chifley Hotel at Eastern Creek for a hearty buffet breakfast. Approx. a 1.5 hour 90km drive.

After breakfast wander across the road to the new Sydney Motor Park (Eastern Creek Raceway) to the largest gathering of Porches ever at one race venue in Australia.

This inaugural Porsche Rennsport Australia Motor Racing Festival event should not be missed, so what better way to attend than start off the day with a great drive, delicious breakfast shared with all your Porsche Club buddies, so see you there by registering now.



Image

300 Porsches expected to assemble at Australia's first Rennsport Motor Racing Festival